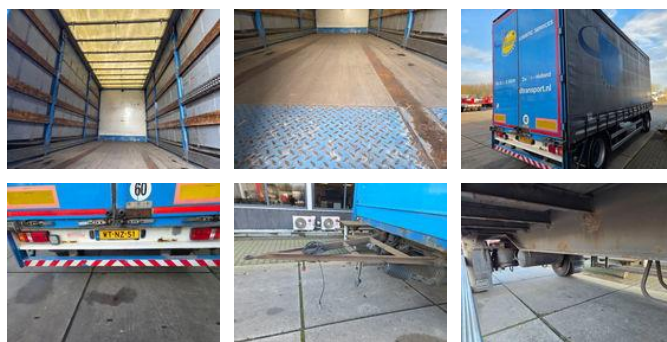




## DRACO 2 as schuifzeil

### General features

Brand	DRACO
Subcategory	Sliding curtain
Licence plate	WT-NZ-51
Construction year	2006
Date of first registration	29-05-2006
Condition	Used
General condition	Good



### Characteristics

Empty weight	4.560kg
--------------	---------

Load capacity	13.440kg
GVW	18.000kg
Length	921cm
Width	255cm

# DRACO 2 as schuifzeil

## Technical specifications

Number of axes 2

## Accessories